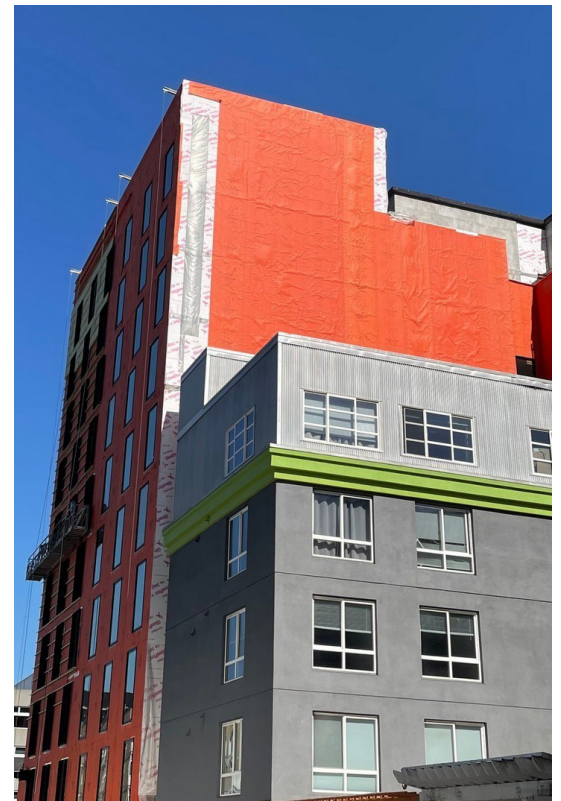


The AC Hotel Downtown in Seattle, WA, features 90,000 sq. ft. of WrapShield SA Self-Adhered weather-resistant barrier from VaproShield. Installed over a gypsum substrate, WrapShield SA helped the project meet the stringent C402.5 requirements of the Washington State Energy Code, which mandates a tighter building envelope for energy efficiency. With its proven ASTM E2357-tested airtight performance, WrapShield SA effectively reduces air infiltration, contributing significantly to the building's overall energy efficiency. This energy-conscious construction approach aligns with modern standards for reduced utility costs, enhancing comfort for future hotel guests and lowering operational expenses.

By providing a durable, vapor permeable and airtight barrier, WrapShield SA enhances the building's longevity and operational efficiency by reducing the significance of mold and mildew. The continuous air barrier design is anticipated to reduce HVAC costs by up to 10% over the building's lifespan, optimizing long-term energy savings. As a high-performing building envelope solution, WrapShield SA supports the AC Hotel Downtown's commitment to sustainability, protecting it against the Pacific Northwest's moisture-laden environment while reinforcing a robust, energy-efficient structure.





The Specifications

VaproShield Solution	WrapShield SA Self-Adhered
Industry Type	Mixed Use
Construction Type	New
Architect	Johnson Braund www.johnsonbraund.com
VaproShield Rep	NW Partners

