

VaproBond™

a single component 100% silicone sealant
 Product No.: Black: 60309800, White: 60879800

Overview

VaproBond is a single component 100% silicone sealant designed to adhere low surface energy materials to themselves. Use VaproBond to bind layers of VaproShield membranes and/or adhere to typical construction material surfaces and/or as a liquid-applied flashing component with metal framing systems.

VaproBond is appropriate for vertical or horizontal above-grade applications to concrete, masonry, natural stone, structural sheathing, architectural metal panels, painted metals, glass, PVC, FRP, EPDM, all VaproShield WRB/Air Barrier membranes, and most other building materials.

Sizes/Coverage

Coverage will vary based on surface texture and irregularities.

COVERAGE ESTIMATOR (Based on smooth surface)		
Application	Coverage Area	Recommended Thickness
Sealant	125 lin. ft	¼" (6 mm)
Flashing component	5 - 8 ft² (0.56-0.74 m²)	30-50 wet mil (0.76 - 1.27mm)

Equipment

Sausage: Apply using a professional sausage gun. Use a DRY joint knife, trowel, spatula, roller, or brush to spread the product.

Storage And Handling

Store VaproBond unopened sausages at temperatures lower than 80°F (27°C). Do not open sausage until preparation work has been completed. Do not alter or mix with other chemicals. When stored at or below 80°F (27°C) VaproBond has a shelf life of 12 months after the date of manufacture. Do not double stack pallets. Dispose of unused product and container in accordance with local, state, and federal regulations.

Surface And Air Temperatures

- Surface and ambient temperatures should be above 20°F to 120°F (-6.7°C to 49°C) during application and drying.
- Though VaproBond tolerates rain after installation, do not apply to surfaces that are covered with standing water or frost.
- Wind and high temperatures will accelerate drying of VaproBond.

Curing And Drying

At 77°F (25°C) and 50% relative humidity, product is tack-free 25-35 minutes. Higher temperature and/or humidity will shorten this time.

Compatibility

- Concrete
- Masonry
- Natural stone
- Structural sheathing
- Painted Metals
- Glass
- PVC
- FRP
- EPDM
- Dry wood
- Architectural Metal Panels
- Most building materials, urethane, and acrylic sealants and coatings

Sealant Compatibility – view comprehensive ASTM C794 Standard Test Method for Adhesion-in-Peel-Elastomeric Joint Sealants at VaproShield.com

Contact VaproShield Technical – if you have additional compatibility questions.

Preparation

Best Practice: always test a small area of each surface to confirm suitability and desired results before starting overall application. Test with the same equipment, recommended surface preparation, and applications procedures planned for general application.

To ensure best results, apply to clean surfaces free of contaminants. Chemical residues, surface coatings or films may adversely affect adhesion.

Remove dust/debris from intended application area. Protect adjacent surfaces not intended to receive VaproBond.

Ensure positive drainage at all rough openings.

Clean-Up

Clean tools and equipment with mineral spirits immediately after use. Follow all safety precautions. Mechanically remove cured VaproBond using a sharp-edged tool.

Safety

Read the full label and SDS for precautionary instructions before use. Use with adequate ventilation, safety equipment, and jobsite controls during application and handling.

Limitations

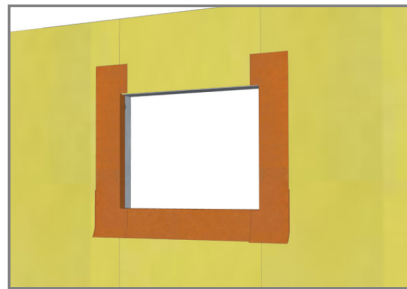
VaproBond should not be used in the following:

- As a substitute for appropriate through-wall flashing.
- Water immersion or below grade or in locations designed to be continuously immersed in water.
- On surfaces requiring painting with traditional organic based coatings.
- As a structural glazing sealant.

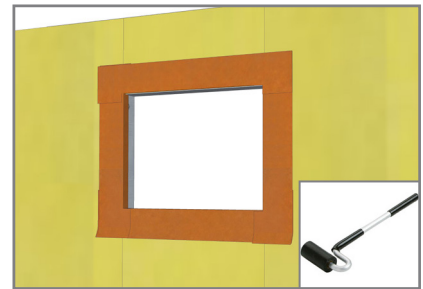
BEST PRACTICE INSTALLATION ROUGH OPENING SEQUENCE FOR VAPROBOND



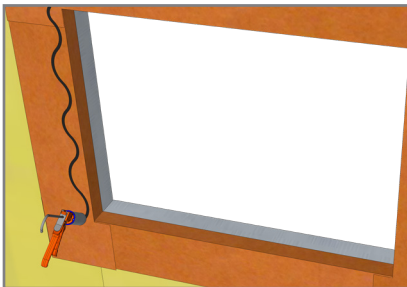
1. Install VaproFlashing SA Self-Adhered (orange) or RevealFlashing SA (black) into sill with 2.75" (70 mm) folded into Rough Opening (R.O.) 9" (229 mm) left on face, with bottom 6" (152 mm) of release film to remain



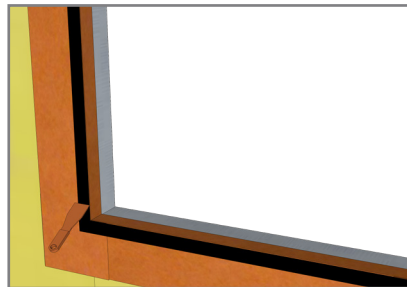
2. Install jamb pieces with 2.75" (70 mm) folded into R.O. 9" (229 mm) to be left on face.



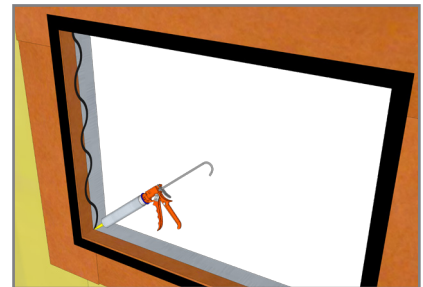
3. Install head piece with 2.75" (70 mm) folded into R.O. 9" (229 mm) to be left on face. Roll all VaproFlashing SA (orange) or RevealFlashing SA (black) sections with weighted roller to ensure full contact.



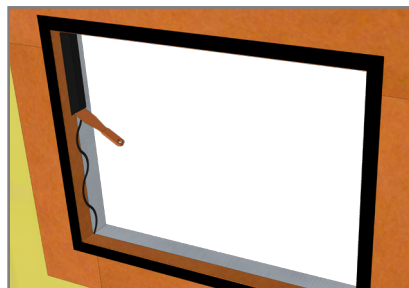
4. Using the sausage gun, apply VaproBond in a zigzag pattern on the wall face surrounding the rough opening.



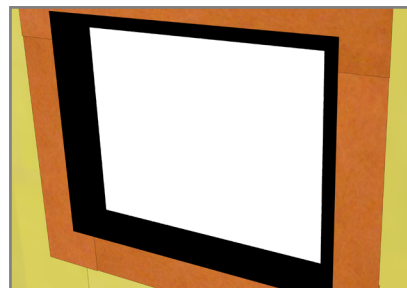
5. Immediately spread the applied material with a putty knife creating a 1" (25 mm) border around the rough opening.



6. Apply additional VaproBond in zigzag pattern on all inner surfaces of the rough opening.



7. Immediately spread until all surfaces are completely covered and substrate below is no longer visible (approximately 30-45 wet mils (0.76-1.14mm)).

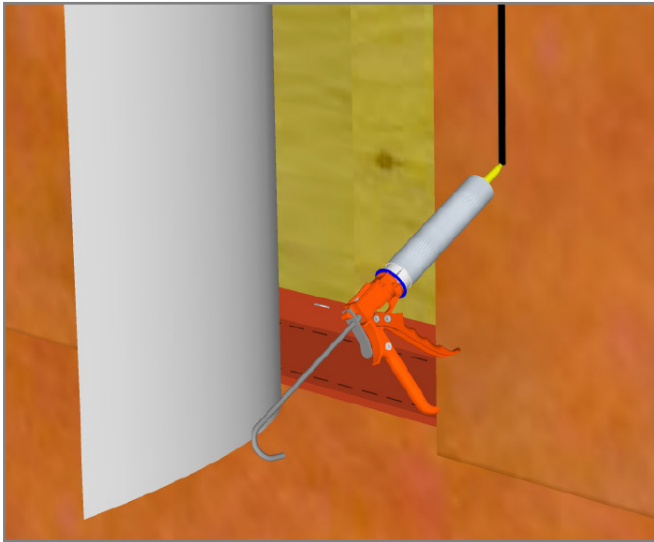


8. Allow VaproBond to set, then inspect for voids and apply additional VaproBond as needed to achieve complete coverage. RO is now ready for window and head flashing installation (by others).

INSTALLATION INSTRUCTIONS

VaproBond™ Product No.: Black: 60309800, White: 60879800

SEALANT BETWEEN MEMBRANE



Overlap vertical seams by 12" (305 mm) minimum. Apply VaproBond adhesive sealant bead just below Integrated Tape line at the vertical seam joint.

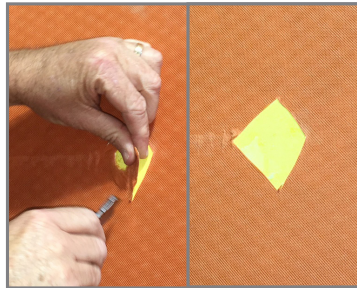


Use hand roller to seal the seam for an air and water tight seal.

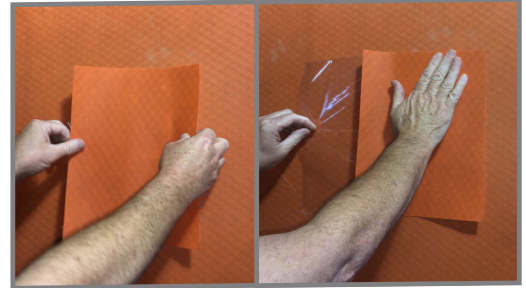
TEAR AND ABRASION REPAIR



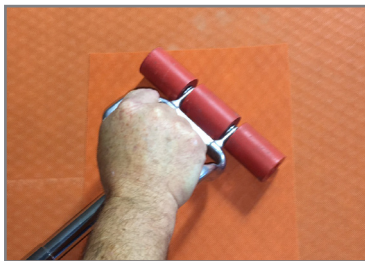
Typical installation tears or abrasions



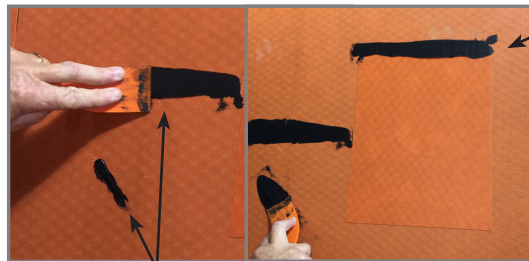
Remove excess membrane from tear until smooth with substrate.



Cut and apply a patch of self-adhered field membrane or VaproFlashing SA Self-Adhered, remove release film, smooth over with hand pressure.



Use hand roller to ensure complete adhesion.



Abrasion Repair: apply VaproBond over abrasion and tool with a DRY joint knife, trowel or spatula.

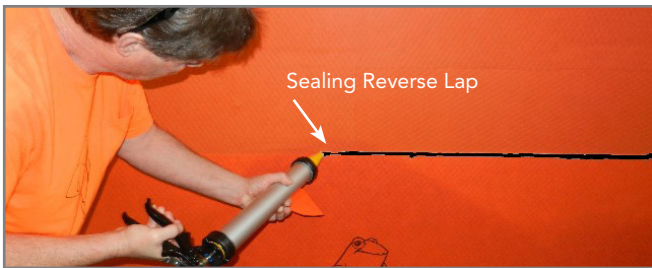
Hole Patch Repair: seal the reverse lap (at top) with VaproBond to ensure a water and air tight seal.

INSTALLATION INSTRUCTIONS

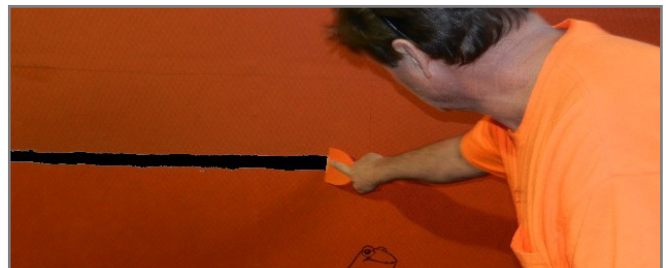
VaproBond™ Product No.: Black: 60309800, White: 60879800

REVERSE LAP SEALANT

VAPROSHIELD BEST PRACTICE IS TO AVOID REVERSE LAPS BY PROPERLY SHINGLING MEMBRANE AND ROUGH OPENING FLASHING.

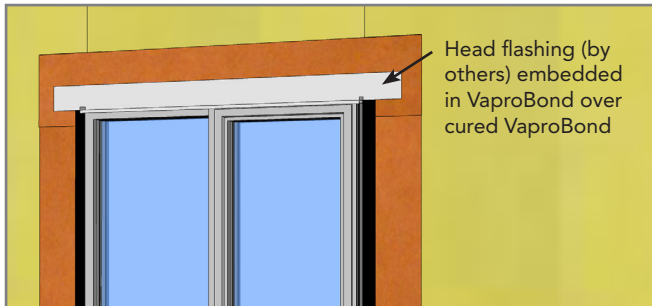


Apply 3/8" (9.5mm) minimum bead line of VaproBond to the reverse lapped membrane.



Use a DRY joint knife or trowel to tool VaproBond to shed water.

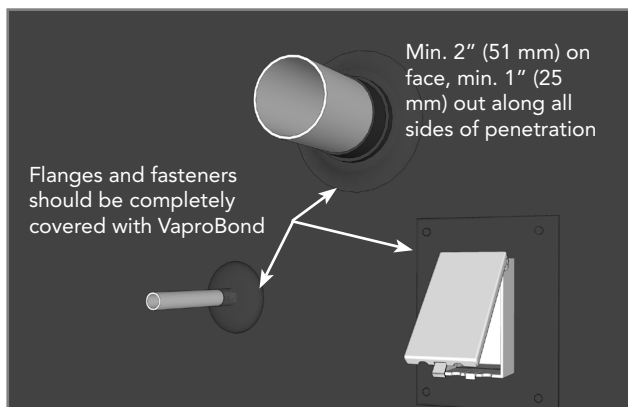
OTHER TYPICAL SEALANT USES



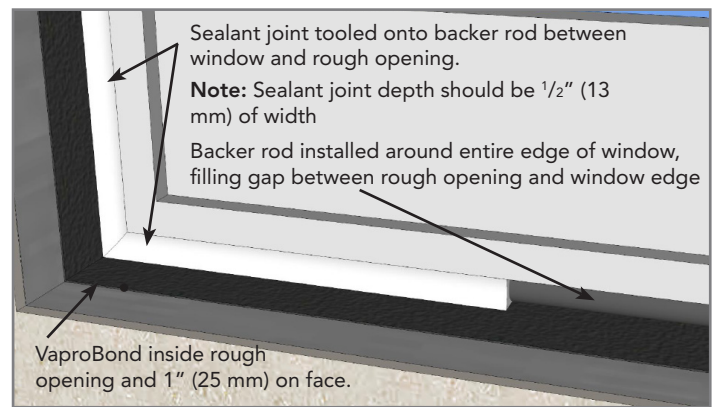
Headflashing sealant



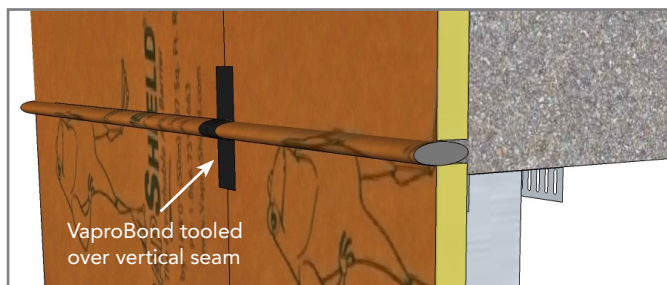
Sealing VaproSilicone Transition Materials



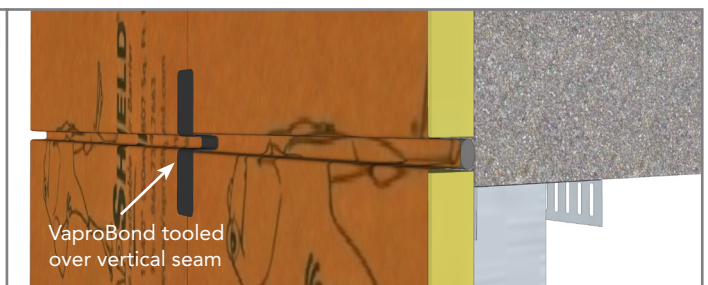
Penetration Sealant



Interior Air Seal



Floor Line Movement Joints



Outward

Inward